

Transfer or duplication of this document as well as the utilisation or communication of its content are not permitted unless express consent is granted. Violations give rise to claims for damages. All rights reserved in case of patent, utility model or design patent registrations.

Weitergabe sowie Vervielfältigung dieses Dokuments, Verwertung und Mitteilung seines Inhalts sind verboten, soweit nicht ausdrücklich gestattet. Zuwiderhandlungen verpflichten zu Schadenersatz. Alle Rechte für den Fall der Patent-, Gebrauchsmuster- oder Designeintragung vorbehalten.

1

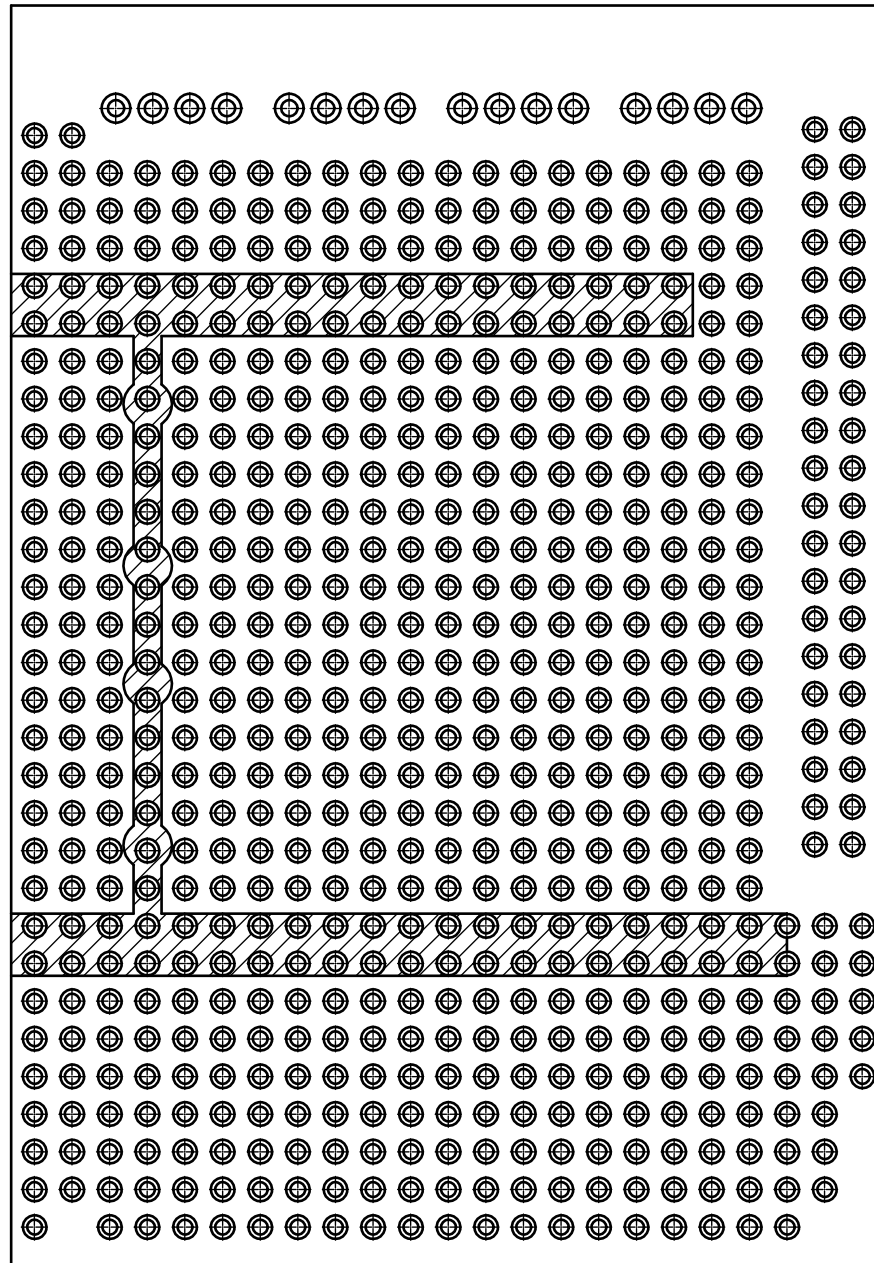
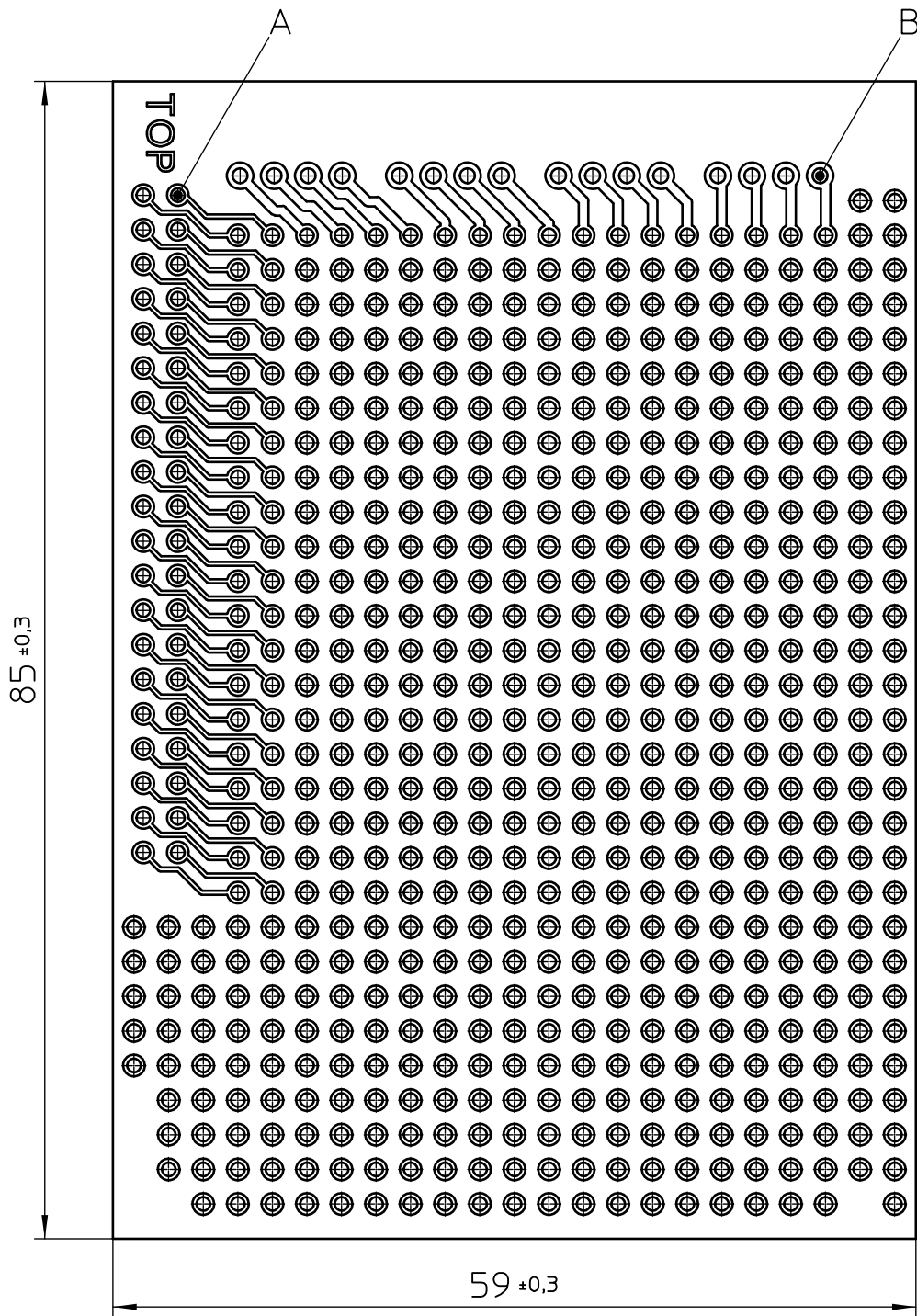
2

3

4

5

6



General Information

- Simplified representation
- Document excluded from change process
- Linear dimensions [mm]
- Dot matrix pitch: 2,54mm ; drill size: $\phi 1$
- Thickness: 1,6±0,2
- Restricted area

- Application: RPI-BC 107,6 DEV-KIT

- Further information:
www.phoenixcontact.com webcode: #0664

Terminal area for:

A) PSTD 0,65x0,65/40-2,54

B) PTSM 0,5/ 4-HH-2,5-THR WH R32

DIN A3 	document-No. / RI	date	scale
	00914691 / 00	04.02.2016	2:1
ident.-No.	document-type		description
2202994	Customer drawing		
page 1	of 1	RPI-BC INT-PCB SET	

1

2

3

4

5

6

A

B

C

D

E