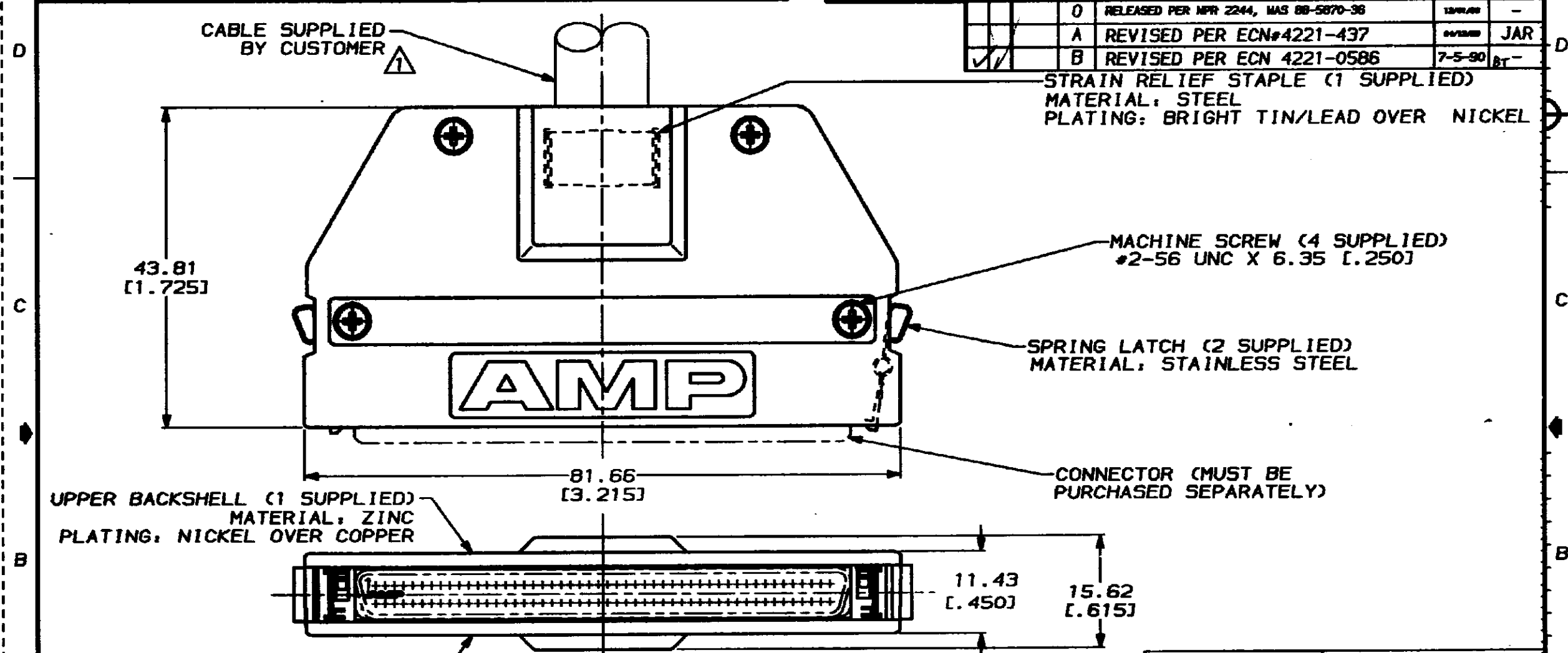


4
DRAWING MADE BY THIRD ANGLE PROJECTION
THIS DRAWING IS UNPUBLISHED. RELEASED FOR PUBLICATION .19
© COPYRIGHT 19 BY AMP INCORPORATED. ALL INTERNATIONAL RIGHTS RESERVED.

8 BD 39

REVISIONS			
ZONE	LTR	DESCRIPTION	DATE
	0	RELEASED PER MFR 2244, MAS 88-5870-36	12/91/88
	A	REVISED PER ECN#4221-437	04/19/89
	B	REVISED PER ECN 4221-0586	7-5-90



12.70 [.500] MAX CABLE DIA

METRIC

DO NOT SCALE PRINT. UNLESS SPECIFIED DIMENSIONS IN INCHES TOLERANCES ON: 2 PLC DEC ± .005 3 PLC DEC ± 0.001 (MILS) ANGLES ± .5°	OR 12-30-88 D.A. McCAFFREY CHK 12-30-88 D.E. BUECK APPD 12-20-88 J. BRONKHORST APPD 12-30-88 C.E. REYNOLDS
MATERIAL	PRODUCT SPEC
FINISH	APPLICATION SPEC
WEIGHT	

AS SHOWN	749197-1
REMARKS	PART NO
AMP AMP INCORPORATED Harrisburg, Pa. 17105	
INDIVIDUAL KIT, UNASSEMBLED, 100 POSITION, STRAIGHT EXIT, UNKEYED, AMPLINITE .050 Series	
SIZE	00779
SCALE	2:1
FIG. NO	749197
DRAWING NO	1 OF 1