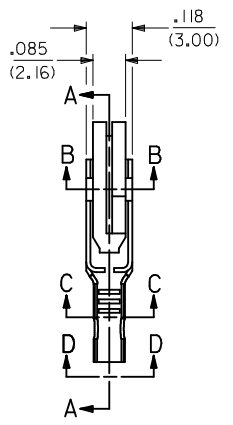
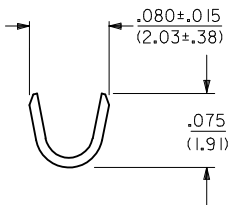
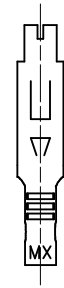
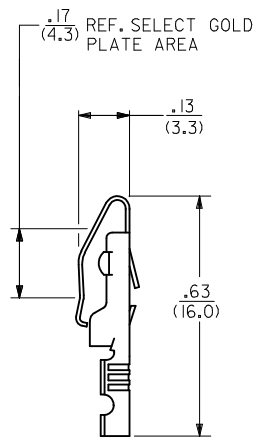


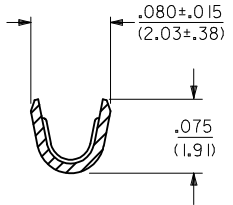
SECTION A-A



SECTION C-C



VIEW D-D



LEGEND

4573-***
 FORM
 BLANK=CHAIN
 L=LOOSE
 PLATING
 (PER SDES-88)

NOTES:
 1) MATERIAL: BRASS, ALLOY C260, .010/(0.25) THICK.
 2) FINISH:
 (P909) * : OVERALL HOT TIN DIP: .000100/(0.00254) MIN.
 (P555) : SELECT GOLD: .000015/(0.00038) MIN.
 OVERALL NICKEL: .000030/(0.00076) MIN.
 (P228) : SELECT GOLD: .000030/(0.00076) MIN.
 SELECT TIN: .000100/(0.00254) MIN.
 OVERALL NICKEL UNDERPLATE .000050/(0.00127) MIN.
 * THE PRIMARY SHIPPING CARTON WILL BE LABELED "COMPLIANT TO
 RoHS DIRECTIVE 2002/95/EC AND ELV ANNEX II OF DIRECTIVE 2000/53/EC".
 CARTONS WITHOUT THIS LABEL MAY CONTAIN PRODUCT WITH TIN/LEAD PLATING.

3) PRODUCT SPECIFICATION: PS-09-50 APPLIES.
 4) TERMINAL FOR USE WITH 24-30 AWG WIRE.

CHANGE P/N'S EC NO: UCP2009-1522 DRAWN:KIPPER 2008/12/15 CHKD:SSOUSEK 2008/12/18 APPR:FSMITH 2008/12/22	DESCRIPTION	QUALITY SYMBOLS	GENERAL TOLERANCES (UNLESS SPECIFIED)		DIMENSION STYLE		SCALE	DESIGN UNITS	THIRD ANGLE PROJECTION	
		▼=0 ▽=0	mm	INCH	IN/MM		1:1	INCH	MOLEX INCORPORATED SD-4573	
REV F2	4 PLACES ± --- ± --- 3 PLACES ± --- ± .010 2 PLACES ± 0.25 ± .014 1 PLACE ± 0.36 ± --- ANGULAR ± 1/2°	DRAWN BY		DATE		TITLE TERMINAL CRIMP ON				
		ROBERTS		08/15/91						
DRAFT WHERE APPLICABLE MUST REMAIN WITHIN DIMENSIONS		CHECKED BY		DATE		APPROVED BY LENZ 08/15/91				
		PATEL		08/15/91						
SEE CHART THIS DRAWING CONTAINS INFORMATION THAT IS PROPRIETARY TO MOLEX INCORPORATED AND SHOULD NOT BE USED WITHOUT WRITTEN PERMISSION		MATERIAL NO.		DOCUMENT NO.		SHEET NO. 1 OF 2				

PART NO.	ENG. NO.	PART NO.	ENG. NO.	PART NO.	ENG. NO.	PART NO.	ENG. NO.
08-03-0305	4573-P909						
08-03-0306	4573-P909L						
08-05-0303	4573-P555						
08-05-0304	4573-P555L						
50-36-2431	4573-P228						
50-36-2432	4573-P228L						

COLUMN NO. 1 CON'T. IN COLUMN NO. SHEET NO. COLUMN NO. 2 CON'T. IN COLUMN NO. SHEET NO. COLUMN NO. 3 CON'T. IN COLUMN NO. SHEET NO. COLUMN NO. 4 CON'T. IN COLUMN NO. SHEET NO.

CHANGE P/N'S EC NO: UCP2009-1522 DRAWN: KIPPER 2008/12/15 CHKD: SSOUSEK 2008/12/18 APPR: FSM LTH 2008/12/22	QUALITY SYMBOLS ▽=0 ▽=0	GENERAL TOLERANCES (UNLESS SPECIFIED)		DIMENSION STYLE IN/MM		SCALE 1:1	DESIGN UNITS INCH	THIRD ANGLE PROJECTION		
		4 PLACES ± --- ± ---	3 PLACES ± --- ± .010	2 PLACES ± 0.25 ± .014	1 PLACE ± 0.35 ± ---	DRAWN BY ROBERTS	DATE 08/26/91	TITLE TERMINAL CANTILEVER STRAIGHT-ON CRIMP TYPE		
		ANGULAR ±1/2°				CHECKED BY PATEL	DATE 08/26/91			
		DRAFT WHERE APPLICABLE MUST REMAIN WITHIN DIMENSIONS				APPROVED BY LENZ	DATE 08/26/91	MOLEX INCORPORATED DOCUMENT NO. SD-4573		

SIZE THIS DRAWING CONTAINS INFORMATION THAT IS PROPRIETARY TO MOLEX INCORPORATED AND SHOULD NOT BE USED WITHOUT WRITTEN PERMISSION