

### ●For 3-Phase Motor Drivers

| Part Number | Circuit Count | V <sub>CE0</sub> (V)/ V <sub>DSS</sub> (V)/ V <sub>CEs</sub> (V) | I <sub>C</sub> (A)/ I <sub>D</sub> (A) | h <sub>FE</sub> (min) | R <sub>Ds(ON)</sub> max (Ω) | Equivalent Circuit | Package                   |
|-------------|---------------|--|--|-----------------------|-----------------------------|--------------------|---------------------------|
| STA303A     | 3             | 100  | 4                                      | 1000                  |                             | 4                  | SIP8 (STA8Pin)            |
| STA302A     | 3             | -50  | -4                                     | 1000                  |                             | 5                  | SIP8 (STA8Pin)            |
| SLA5212     | 6             | 35   | ±8                                     |                       | 70m                         | 14                 | SIP15 with Fin (SLA15Pin) |
| SLA5096     | 6             | 55   | ±8                                     |                       | 80m                         | 14                 | SIP15 with Fin (SLA15Pin) |
| SLA5059     | 6             | 60   | ±4                                     |                       | 0.55                        | 6                  | SIP12 with Fin (SLA12Pin) |
| SLA5060     | 6             | 60   | ±6                                     |                       | 0.22                        | 6                  | SIP12 with Fin (SLA12Pin) |
| SLA5061     | 6             | 60   | ±10                                    |                       | 0.14                        | 6                  | SIP12 with Fin (SLA12Pin) |
| SLA5064     | 6             | 60   | ±10                                    |                       | 0.14                        | 7                  | SIP12 with Fin (SLA12Pin) |
| SMA6080     | 6             | ±60  | ±2                                     | 2000                  |                             | 9                  | SIP12 (SMA12Pin)          |
| SMA6010     | 6             | ±60  | ±4                                     | 2000                  |                             | 9                  | SIP12 (SMA12Pin)          |
| SLA6012     | 6             | ±60  | ±4                                     | 2000                  |                             | 8                  | SIP12 with Fin (SLA12Pin) |
| SMA5127     | 6             | ±60  | ±4                                     |                       | 0.55                        | 10                 | SIP12 (SMA12Pin)          |
| SLA5022     | 6             | ±60  | ±6                                     | 2000                  | 0.22                        | 11                 | SIP12 with Fin (SLA12Pin) |
| SLA6023     | 6             | ±60  | ±6                                     | 2000                  |                             | 8                  | SIP12 with Fin (SLA12Pin) |
| SLA6024     | 6             | ±60  | ±8                                     | 2000                  |                             | 8                  | SIP12 with Fin (SLA12Pin) |
| SLA6026     | 6             | ±60  | ±10                                    | 2000                  |                             | 8                  | SIP12 with Fin (SLA12Pin) |
| SMA5125     | 6             | ±60  | ±10                                    |                       | 0.14                        | 7                  | SIP12 (SMA12Pin)          |
| SLA6022     | 6             | ±80  | ±5                                     | 2000                  |                             | 8                  | SIP12 with Fin (SLA12Pin) |
| SLA6020     | 6             | ±100   | ±5                                     | 2000                  |                             | 9                  | SIP12 with Fin (SLA12Pin) |
| SMA5130     | 6             | ±250   | ±2.5                                   | 2000                  | 0.9                         | 16                 | SIP15 (SMA15Pin)          |
| SMA5131     | 6             | 250  | 2                                      |                       | 1.8                         | 13                 | SIP12 (SMA12Pin)          |
| SMA5112     | 6             | 250  | 7                                      |                       | 0.5                         | 13                 | SIP12 (SMA12Pin)          |
| SMA5117     | 6             | 250  | 7                                      |                       | 0.25                        | 13                 | SIP12 (SMA12Pin)          |
| SMA5132     | 6             | 500  | 1.5                                    |                       | 4                           | 13                 | SIP12 (SMA12Pin)          |
| SMA5133     | 6             | 500  | 2.5                                    |                       | 2                           | 13                 | SIP12 (SMA12Pin)          |
| SLA5075     | 6             | 500  | ±5                                     |                       | 1.4                         | 12                 | SIP15 with Fin (SLA15Pin) |
| SMA5118     | 6             | 500  | ±5                                     |                       | 1.4                         | 13                 | SIP12 (SMA12Pin)          |
| SLA5201     | 6             | 600  | 7                                      |                       |                             | 15                 | SIP15 with Fin (SLA15Pin) |

### ●For Driving Stepping Motor with Two Supplies

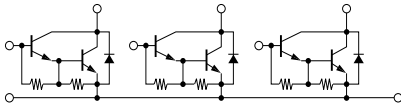
| Part Number | Circuit Count | V <sub>CE0</sub> (V)/ V <sub>DSS</sub> (V) | I <sub>C</sub> (A)/ I <sub>D</sub> (A) | h <sub>FE</sub> (min) | R <sub>Ds(ON)</sub> max (Ω) | Equivalent Circuit | Package          |
|-------------|---------------|--|--|-----------------------|-----------------------------|--------------------|------------------|
| SMA6511     | 5             | 100±15/-60                                 | 1.5/-3                                 | 2000                  |                             | 17                 | SIP12 (SMA12Pin) |

### ●For 5-Phase Motor Drive

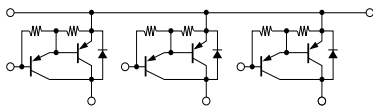
| Part Number | Circuit Count | V <sub>CE0</sub> (V)/ V <sub>DSS</sub> (V) | I <sub>C</sub> (A)/ I <sub>D</sub> (A) | h <sub>FE</sub> (min) | R <sub>Ds(ON)</sub> max (Ω) | Equivalent Circuit | Package                   |
|-------------|---------------|--|--|-----------------------|-----------------------------|--------------------|---------------------------|
| SLA5074     | 4             | 60   | 5                                      |                       | 0.3                         | 18                 | SIP15 with Fin (SLA15Pin) |
| SLA5065     | 4             | 60   | 7                                      |                       | 0.1                         | 18                 | SIP15 with Fin (SLA15Pin) |
| SLA5073     | 6             | 60   | 5                                      |                       | 0.3                         | 14                 | SIP15 with Fin (SLA15Pin) |
| SLA5068     | 6             | 60   | 7                                      |                       | 0.1                         | 14                 | SIP15 with Fin (SLA15Pin) |

●Equivalent Circuit (for Motor Driver)

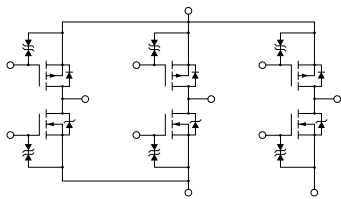
④



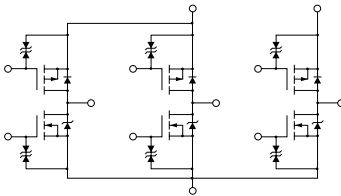
⑤



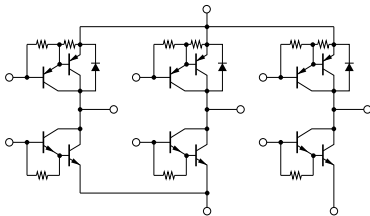
⑥



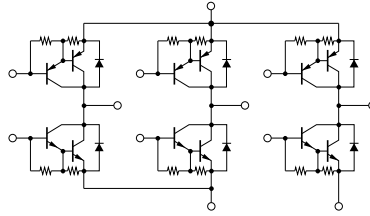
⑦



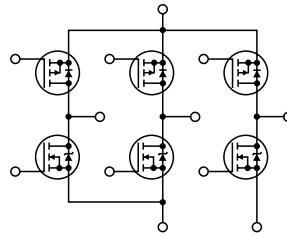
⑧



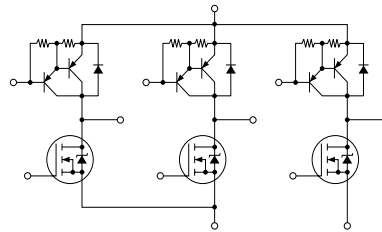
⑨



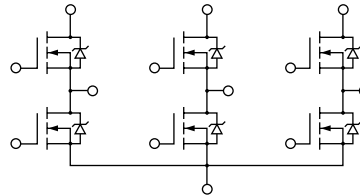
⑩



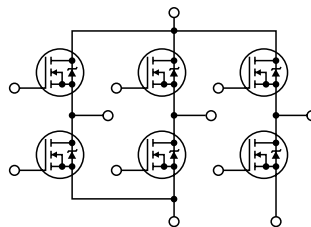
⑪



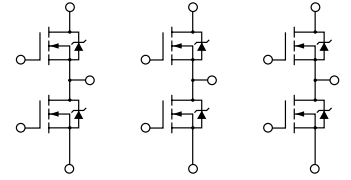
⑫



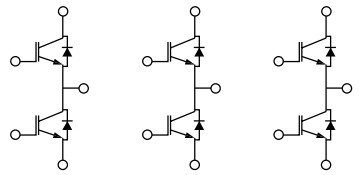
⑬



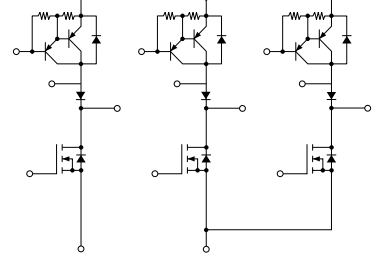
⑭



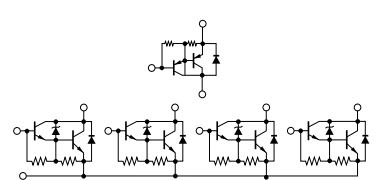
⑮



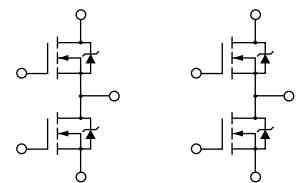
⑯



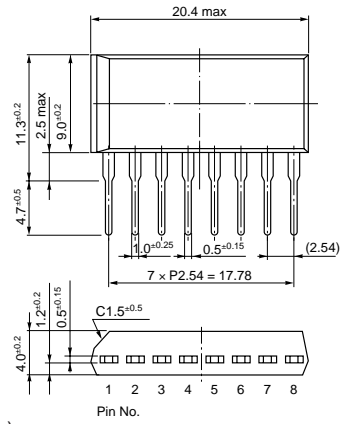
⑰



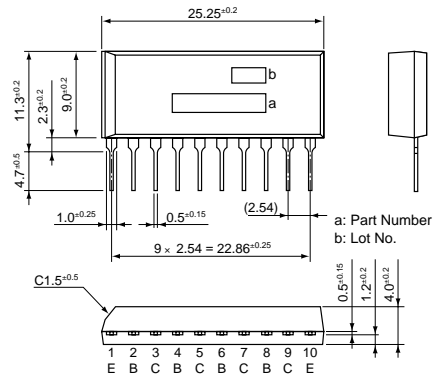
⑱



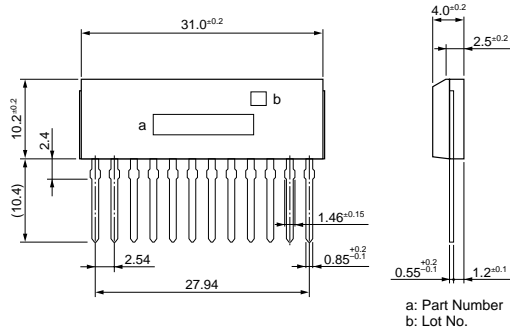
• SIP 8 (STA8Pin)



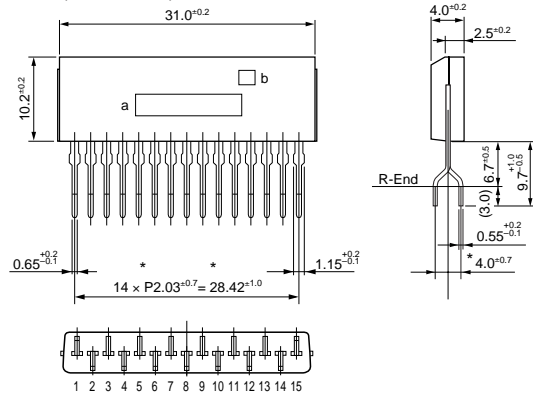
• SIP 10 (STA10Pin)



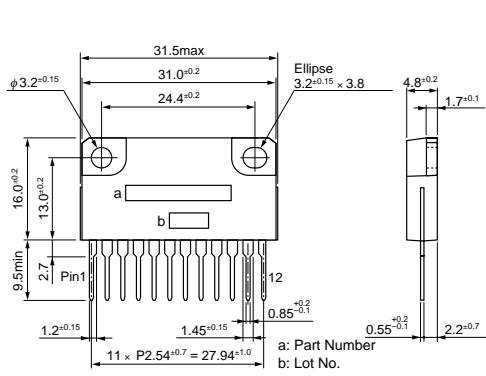
• SIP 12 (SMA12Pin)



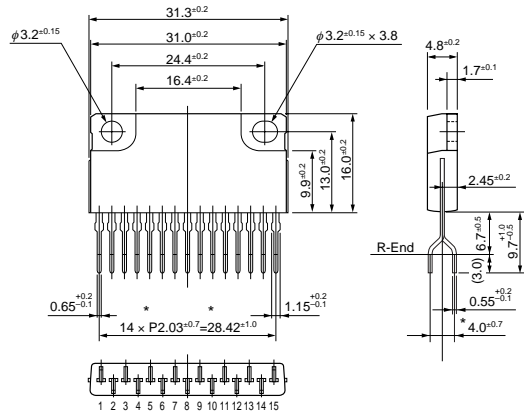
• SIP 15 (SMA15Pin)



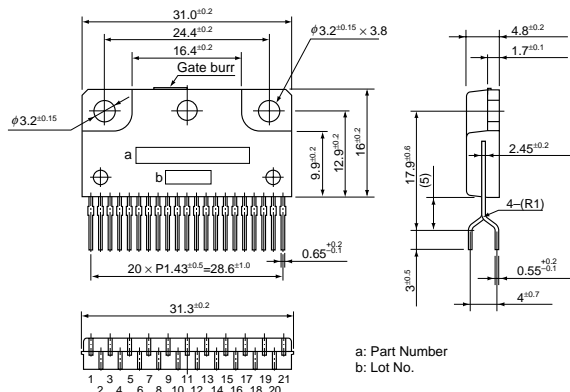
• SIP 12 with Fin (SLA12Pin)



• SIP 15 with Fin (SLA15Pin)



• SIP 15 with Fin (SLA15Pin)



(Unit:mm)