

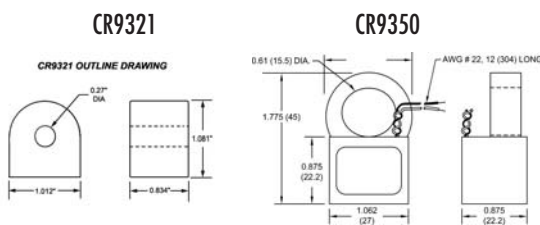
DC SWITCHING (-NPN or -PNP)

V_{ce} (full off): 30 VDC max.
 I_{sink} (full on): 120 mA DC max. @ rated full-on
 V_{ce} (reverse polarity voltage): 1.2 VDC @ 100 mA DC
 V_{ce} (full on): 1.5 VDC @ 120 mA DC I_{sink}
 Off state leakage current: 5 μ A @ 30 VDC (typical)

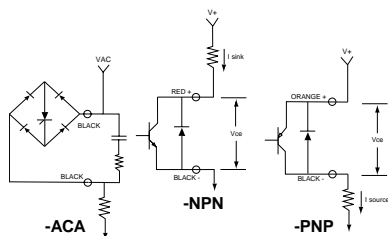
AC SWITCHING (-ACA)

Off state voltage: 240 VAC RMS max.
 Minimum holding current: 10 mA
 On state current: 0.8 AAC RMS max. continuous
 Off state leakage: 50 μ A @ 240 VAC max.
 Peak Non-Repetitive Surge Current:
 8 AAC RMS (1 cycle, 60 Hz.)

OUTLINE DRAWING



ELECTRICAL CONNECTIONS



The **CR9300** Series is a low cost, self powered, fixed set-point Current Switch designed for applications that require an on-off indication of current flow. Current levels above the guaranteed full-on level will turn the output to full on. The Current Switch is recommended only for applications where the continuous operating current is above the rated full on level of 350 mA. Operation below this point will not drive the output device full-on and derate the output ratings. The unit is available with a NPN or PNP output transistor for switching DC and a SCR output for switching AC. Connections can be made directly to items such as a PLC or electromechanical relay. Note that connections made directly to an inductive device such as an electromechanical relay will require a customer supplied clamping diode for DC operation or a snubber network for AC operation.

Applications

Continuity
 Proving Switch

Features

Low Cost
 Low Fixed Trip Point
 Fully Isolated
 Reverse Output Polarity Protected
 Self-Powered

Specifications

Rated Full-on: 0.350 AAC RMS
 Turn-on Time: 100 ms. max. @ rated full-on
 Turn-off Time: 250 ms. max. to 80% of V_{ce}
 Maximum sense current: Continuous: 100 AAC
 1 Second: 500 AAC

Frequency*: 50 to 400 Hz
 Operating Temperature: -30° C to +60° C
 Storage Temperature: -55° C to +85° C
 Weight 0.08 LBS.

*All specifications for operation at 60 Hz only

Regulatory Agencies



PART NUMBER

CR□□□□ - □□□ - □ CURRENT SWITCH

9321 .27 dia. Window
9350 .61 dia. Window

NPN Transistor Output
PNP Transistor Output
ACA AC Output

M Mounting Case (Optional)

