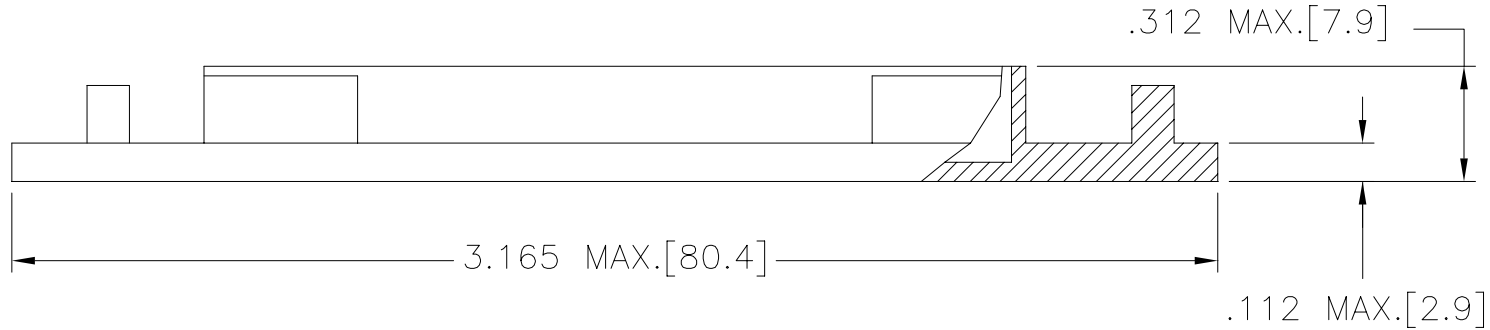
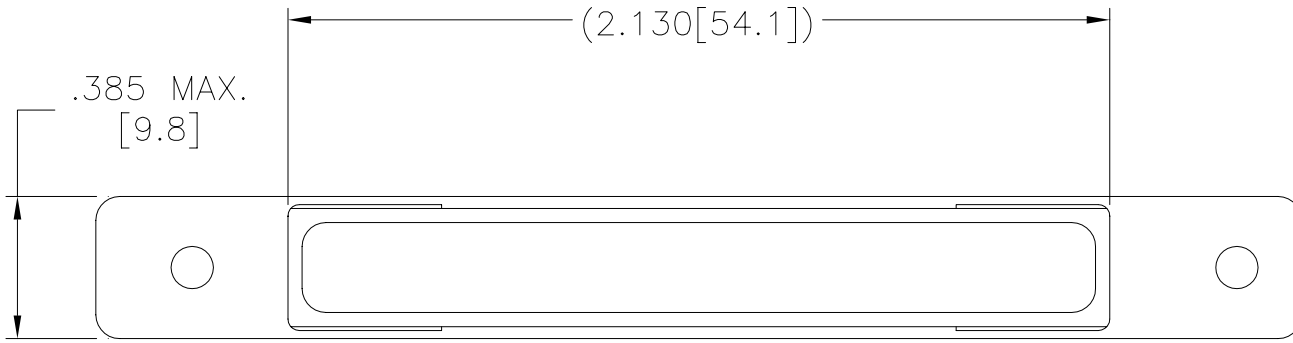


THIS DRAWING AND THE INFORMATION SET FORTH HEREON ARE THE PROPERTY OF TYCO ELECTRONICS CORPORATION AND ARE TO BE HELD IN TRUST AND CONFIDENCE. PUBLICATION, DUPLICATION, DISCLOSURE OR USE FOR ANY PURPOSE NOT EXPRESSLY AUTHORIZED IN WRITING BY TYCO ELECTRONICS CORPORATION IS PROHIBITED.

REVISION		DATE	APPROVED
REV	DESCRIPTION		
A	REDRAWN & UPDATED PER DCR# C050057	FEB/8/05	M.HIGGY



NOTES:

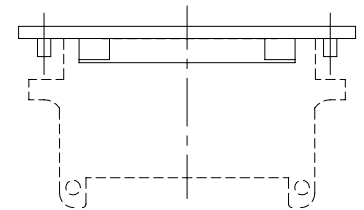
1. THIS PART IS USED WITH MTC100, 2 INCH RECEPTACLE CONNECTORS.

2 MATERIAL: ELECTROSTATIC DISSIPATIVE POLYETHYLENE MEETING REQUIREMENTS OF MIL-PRF-81705 TYPE II. COLOR PINK

3 WEIGHT: 0.004 Lbs. [ 1.94 gm.] MAXIMUM.

If this document is printed it becomes uncontrolled. Check for the latest revision.

VIEW SHOWING TYPICAL INSTALLATION



RECEPTACLE CONNECTOR

© 2005 Tyco Electronics Corporation. All rights reserved

SPECIFICATION CONTROL DRAWING

ITEM	QTY.	PART NO	DWG OR SPEC NO	DESCRIPTION
------	------	---------	----------------	-------------

PARTS LIST

UNLESS OTHERWISE SPECIFIED DIMENSIONS ARE INCHES. METRIC DIMENSIONS ARE IN BRACKETS.  DECIMAL TOLERANCES .XXX ± .005 [ .13 mm] .XX ± .01 [ .25 mm] .X ± [ mm]  ANGLE TOLERANCE .X ±  WEIGHT 3  CAD FILE C050057.DWG	DRAWN ZS.ORBAN DATE FEB-1-05	DATE FEB-1-05		TYCO ELECTRONICS 300 Constitution Drive Menlo Park, CA. 94025 USA		
	APPROVED M.HIGGY DATE FEB-1-05	DATE FEB-1-05				TITLE CAP, DUST, 2 INCH, RECEPTACLE MTC100 SERIES ELECTROSTATIC PROTEC., COLOR PINK
	MATERIAL 2	FINISH AS MOLDED	SIZE A	CAGE CODE: 06090	DWG. NO. CHA-0099	A
	THIRD ANGLE PROJECTION 	DO NOT SCALE THIS DRAWING		SHEET 1 OF 1		