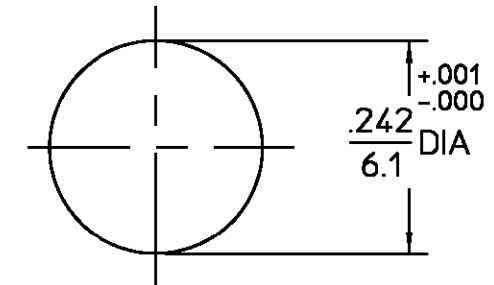


REVISIONS			
REV	DESCRIPTION	DATE	APPROVED
01 <sub>0</sub>	RELEASED	9/12/94	<i>D. Cornelli</i>
B	PER EC 0U20-0262-01	18DEC01	<i>C. Hoang</i>



RECOMMENDED MOUNTING HOLE

HOUSING MOUNTING NUT LOCKWASHER	STAINLESS STEEL PER ASTM-A484 AND ASTM-A582, TYPE 303	PASSIVATE PER QQ-P-35
DIELECTRIC	TFE FLUOROCARBON PER ASTM-D-1457	N/A
CENTER CONTACT	BERYLLIUM COPPER PER ASTM B 196, ALLOY C17300, CONDITION H	GOLD PLATE PER MIL-G-45204
O-RING	FLOUROSILICONE PER MIL-R-25988, CLASS 1, TYPE 1	N/A
COMPONENT	MATERIAL	FINISH

UNLESS OTHERWISE SPECIFIED DIMENSIONS ARE IN INCHES TOLERANCE ON FRAC. DEC. ANGLES ± 1/64 ±.005 ± °	DRAWN BY <i>M.A.</i> DATE 9/7/94	<b>AMP Incorporated</b> 140 Fourth Avenue Waltham, MA 02451-7599	
	CHECKED BY		
These drawings and specifications are the property of Omni Spectra Incorporated and shall not be reproduced or copied or used in whole or in part as the basis for the manufacture or sale of item(s) without written permission.	APPD BY <i>D. Cornelli</i> 9/12/94	<b>AMP</b>	
	USE ASS'Y PROCEDURE	TITLE OST JACK TO OSP PLUG BULKHEAD FEEDTHROUGH ADAPTER	
	NO. AP. <u>N/A</u>	SIZE B CODE IDENT NO. 26805 SCALE 5:1	3184-2451-02 SHEET 1 OF 1

CAPTURED CENTER CONTACT

.XXX = in  
XX.X = mm

CUSTOMER DRAWING

AMP PART # 1057910-1  
SHEET 1 OF 1 REV B