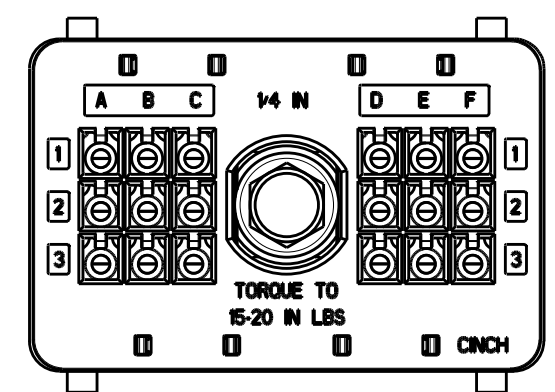
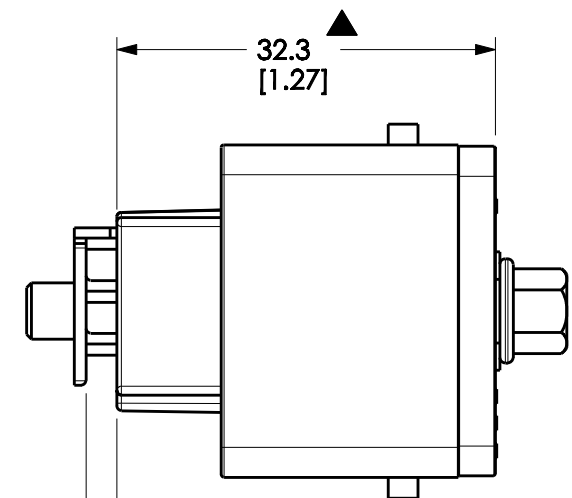
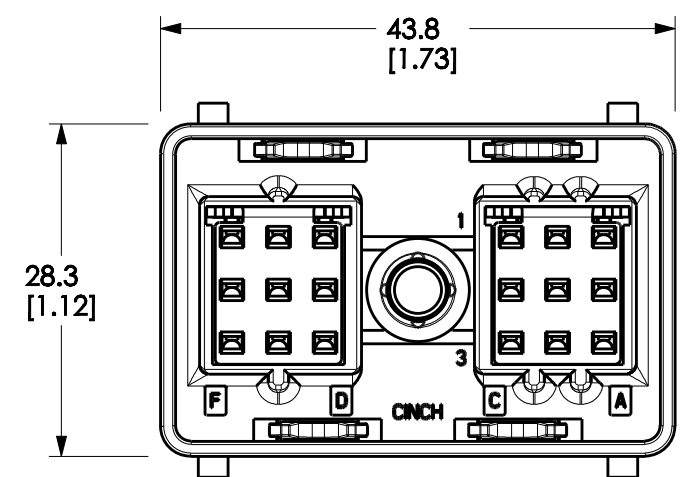
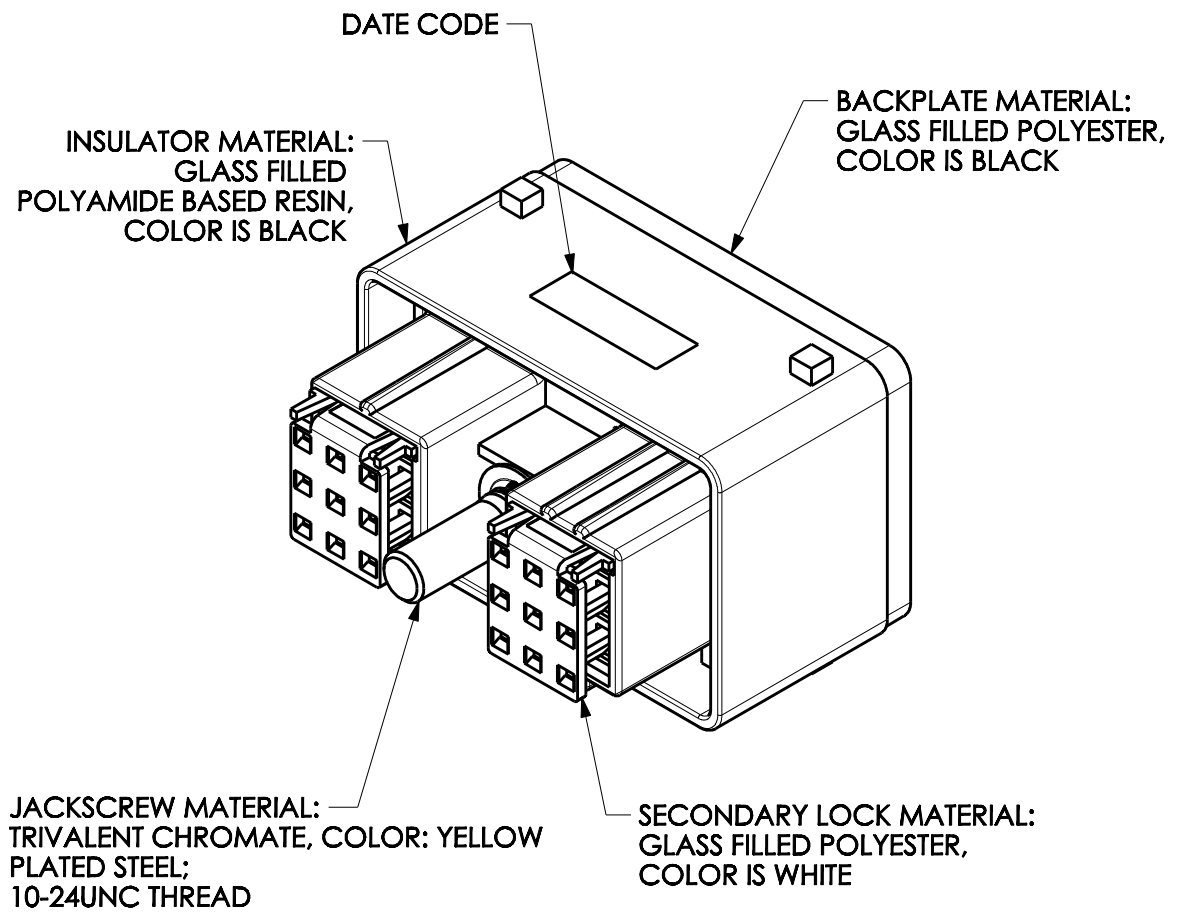


DRAWING REVISIONS (RELEASE DATE ON FILE)			
REV	DOCUMENT	APP	APPROVAL DATE
E	PER CO# 839	V.R.	01/18/10



REAR VIEW

2.6 REF [0.10]
SECONDARY LOCKS SHIPPED
IN PRE-STAGED POSITION



NOTES:

- DIMENSIONS SHOWN IN MILLIMETERS [INCHES].
- FOR WIRE SIZE APPLICATIONS, CONSULT FACTORY.
- FEMALE TERMINALS TO BE ORDERED SEPARATELY: P/N'S 425 00 00 873/872.
- PART MATES WITH CINCH HEADER CONNECTOR (CONSULT FACTORY).
- SEAL PLUGS TO BE ORDERED SEPARATELY: P/N 581 00 00 011.
- DRAWING TOLERANCES (UNLESS OTHERWISE SPECIFIED):
.X = ±0.5
.XX = ±0.25
- SEALING RANGE FOR WIRE INSULATION DIAMETER:
MAXIMUM: 2.64MM [0.104"]; MINIMUM: 1.96MM [0.077"].
- A TRIANGLE "▲" INDICATES A CHARACTERISTIC REQUIRING INSPECTION VERIFICATION.
- IF TIE-WRAP DRESSING CONDUCTORS, CINCH RECOMMENDS A SPACING OF NO LESS THAN 50.8MM [2.00"] BEHIND THE BACK PLATE.

UNITS METRIC		DESIGN ENGINEER PRO/E A.CAINES		DATE 4/25/00		CINCH 1700 FINLEY RD LOMBARD, IL 60148	
DO NOT SCALE DRAWING				TITLE 18 POSITION SOCKET CONNECTOR			
UNLESS OTHERWISE SPECIFIED: ALL DIMENSIONS ARE IN mm				MATERIAL		CONTROL SPEC NUMBER	
CONFIDENTIAL THIS DOCUMENT IS THE PROPERTY OF CINCH. NEITHER THIS DOCUMENT NOR ANY OF THE INFORMATION CONTAINED IN IT MAY BE DUPLICATED OR DISCLOSED WITHOUT PRIOR WRITTEN CONSENT OF CINCH. ©COPYRIGHT 2009 CINCH				MATERIAL SPEC NUMBER		PROJECT NUMBER	
				5810118023		A14243	
				CAGE IDENT NO. 71785		DRAWING NUMBER 5810118023S	
SIZE B		SCALE 1.500		SHEET 1 OF 1			