

DO NOT SCALE FROM THIS PRINT

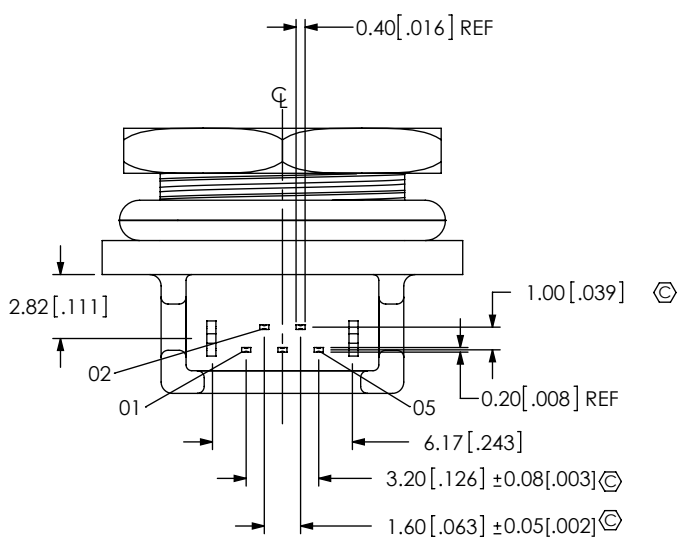
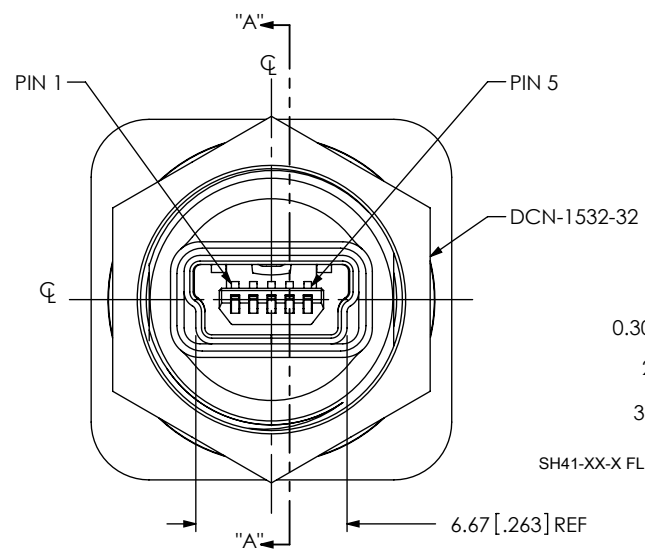
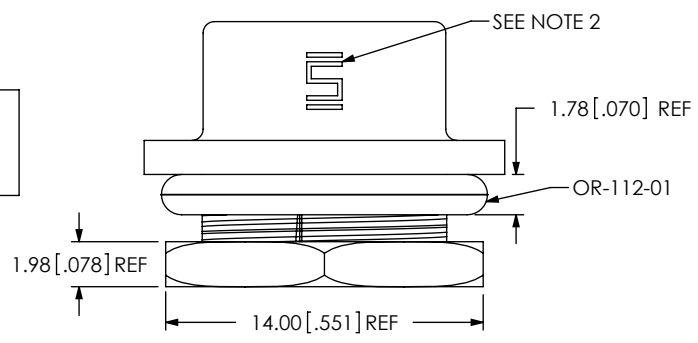
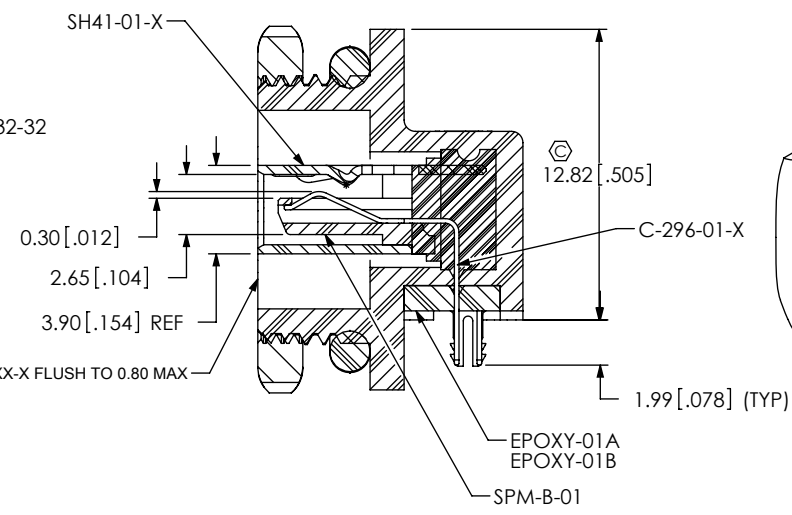


FIG 1
SPM-05-S-B-RA-PF SHOWN

DESIGNED & DIMENSIONED
IN MILLIMETERS [INCHES]



SECTION "A"-"A"

SPM-05-X-X-XXX-PF

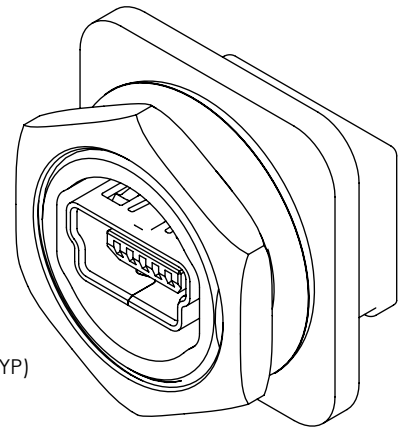
No OF POSITIONS
-05

PLATING SPECIFICATION
-S: SELECTIVE, .000030 GOLD ON POST, TIN ON TAIL

TYPE
-B

OPTION
-PF: PANEL FLANGE

TERMINATION
-RA: RIGHT ANGLE (SHEET 1, FIG 1)
-VT1: VERTICAL THROUGH HOLE (SHEET 2, FIG 2) (SEE NOTE 6)
-VT2: VERTICAL THROUGH HOLE FOR THICKER PANELS (SHEET 7, FIG 3) (SEE NOTE 6)



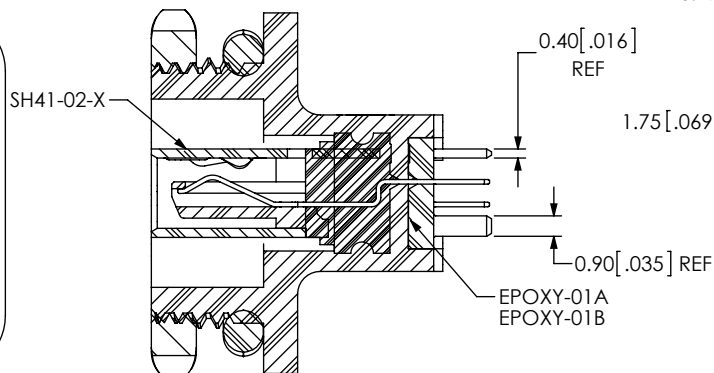
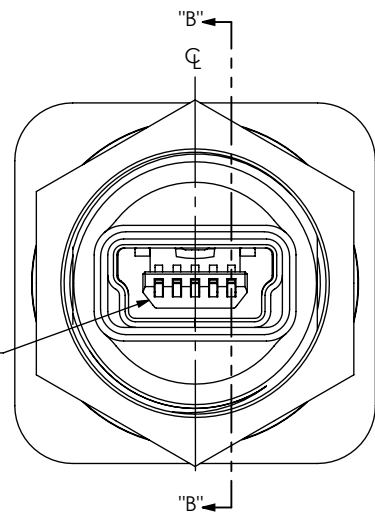
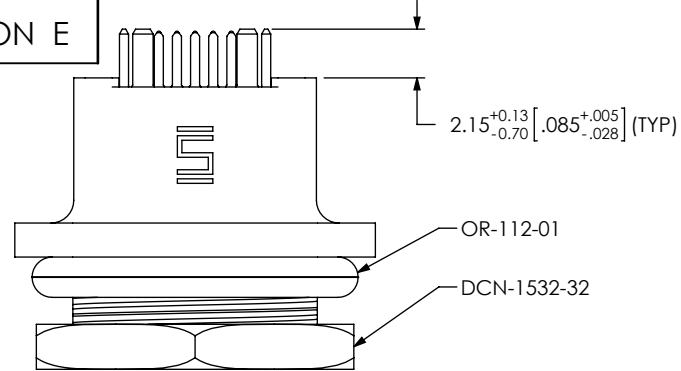
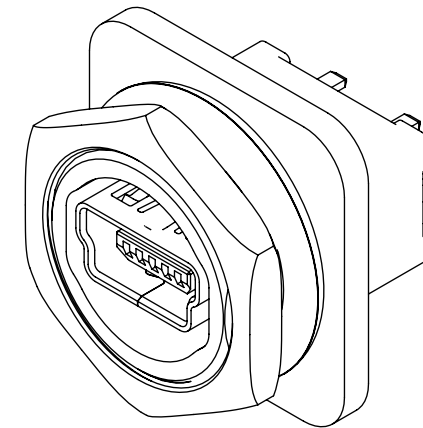
NOTES:

- Ⓢ REPRESENTS A CRITICAL DIMENSION.
- SAMTEC LOGO SHALL APPEAR AT LOCATIONS ON SURFACE SHOWN, APPROXIMATELY 2.50 x 1.56.
- MINIMUM PUSH OUT FORCE: 1N [.25 LB].
- MAXIMUM HEIGHT VARIATION BETWEEN ANY TWO POSTS: 0.13 [.005].
- MAXIMUM ALLOWABLE BOW: 0.05 [.002] MM/MM AFTER ASSEMBLY.
- MAXIMUM PANEL THICKNESS: 2.03 [.080] FOR -RA AND -VT1, MAX PANEL THICKNESS: 5.21 [.205] FOR -VT2, RECOMMENDED PANEL CUT ON SHEET 3.
- FLATS REQUIRED AT R OF CAMS TO AVOID DRAGGING THREADS.
- REQUIRED INSTALLATION TORQUE FOR NUT: 0.28-0.56 N-M [2.5-5.0 IN-LBS].
- PARTS TO BE PACKAGED IN TUBES.

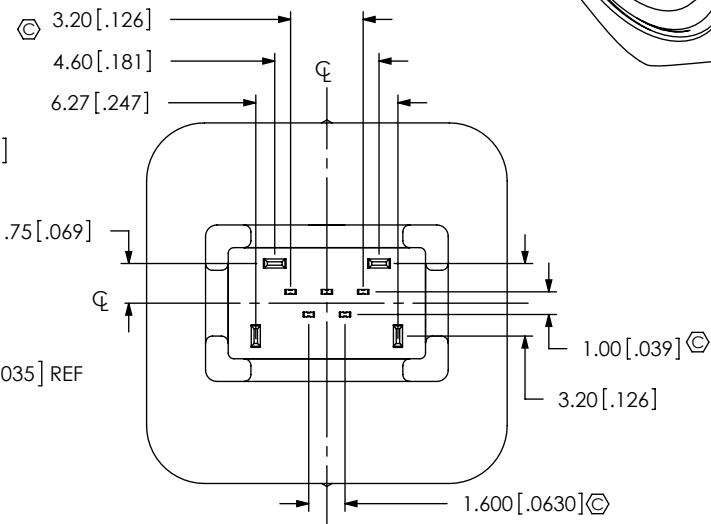
UNLESS OTHERWISE SPECIFIED, DIMENSIONS ARE IN MILLIMETERS. TOLERANCES ARE: DECIMALS ANGLES X.X: ±0.3 [.01] 2° X.XX: ±0.13 [.005] X.XXX: ±0.051 [.0020]	PROPRIETARY NOTE THIS DOCUMENT CONTAINS INFORMATION CONFIDENTIAL AND PROPRIETARY TO SAMTEC, INC. AND SHALL NOT BE REPRODUCED OR TRANSFERRED TO OTHER DOCUMENTS OR DISCLOSED TO OTHERS OR USED FOR ANY PURPOSE OTHER THAN THAT WHICH IT WAS OBTAINED WITHOUT THE EXPRESSED WRITTEN CONSENT OF SAMTEC, INC.	520 PARK EAST BLVD, NEW ALBANY, IN 47150 PHONE: 812-944-6733 FAX: 812-948-5047 e-Mail: info@SAMTEC.com code 55322
	MATERIAL: DO NOT SCALE DRAWING SHEET SCALE: 1:0.333333 INSULATOR: LCP COLOR: BLACK CONTACT: PHOS BRONZE SHIELD: PHOS BRONZE SEAL: SILICONE PREMOLD: PBT, COLOR: BLACK OVERMOLD: LCP; MAX REGRIND: 50%, COLOR: BLACK	
BY: T NEWTON 06/30/2009		SHEET 1 OF 7

REVISION E

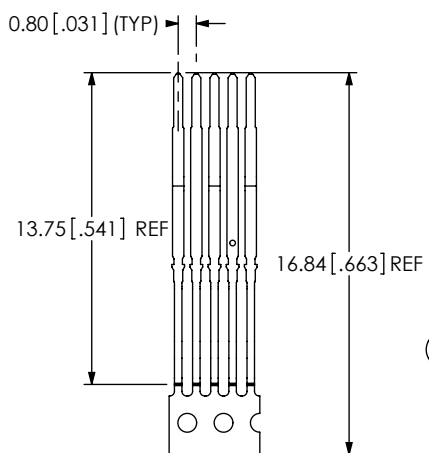
FIG 2
SPM-05-S-B-VTT-PF SHOWN
(SAME AS FIG 1, EXCEPT AS SHOWN)



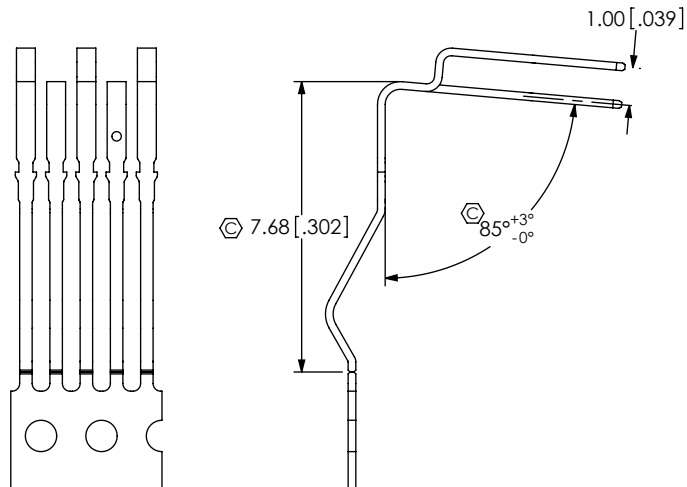
SECTION "B"-"B"



-RA IN-PROCESS 1
CUT COMBS C-296-01-X



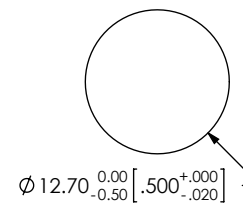
-RA IN-PROCESS 2
FORM C-296-01-X



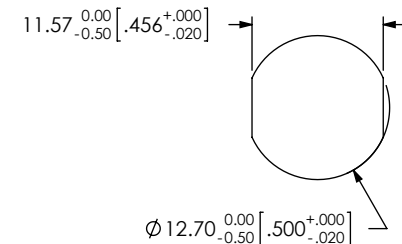
F:\DWG\MISC\MKTG\SPM-05-X-X-XXX-PF-MKT.SLDDRW

RECOMMENDED PANEL CUTOUTS
(SEE NOTE 6)

OPTION 1



OPTION 2



PROPRIETARY NOTE

THIS DOCUMENT CONTAINS INFORMATION CONFIDENTIAL AND PROPRIETARY TO SAMTEC, INC. AND SHALL NOT BE REPRODUCED OR TRANSFERRED TO OTHER DOCUMENTS OR DISCLOSED TO OTHERS OR USED FOR ANY PURPOSE OTHER THAN THAT WHICH IT WAS OBTAINED WITHOUT THE EXPRESSED WRITTEN CONSENT OF SAMTEC, INC.

DO NOT SCALE DRAWING

SHEET SCALE: 1:0.333333

samtec

520 PARK EAST BLVD, NEW ALBANY, IN 47150
PHONE: 812-944-6733 FAX: 812-948-5047
e-Mail: info@SAMTEC.com code 55322

DESCRIPTION:

SEALED PORT MINI USB

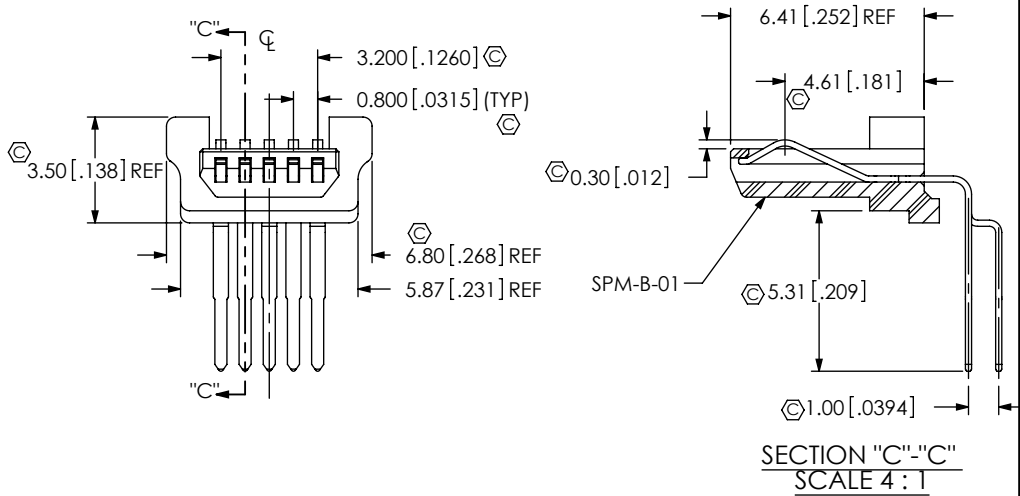
DWG. NO.

SPM-05-X-X-XXX-PF

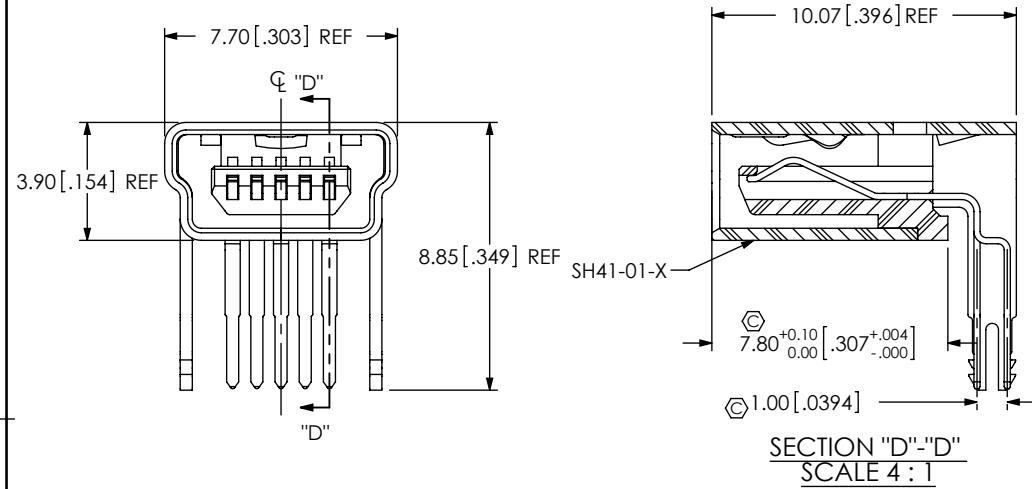
BY: T NEWTON 06/30/2009

SHEET 2 OF 7

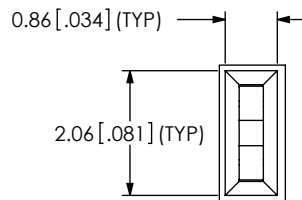
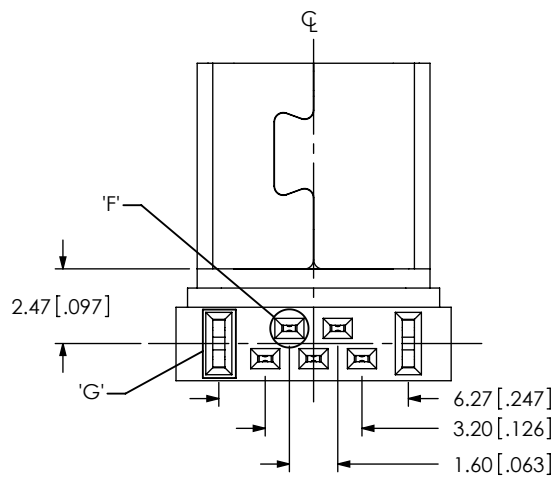
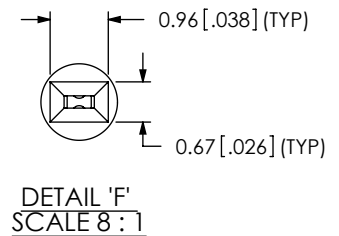
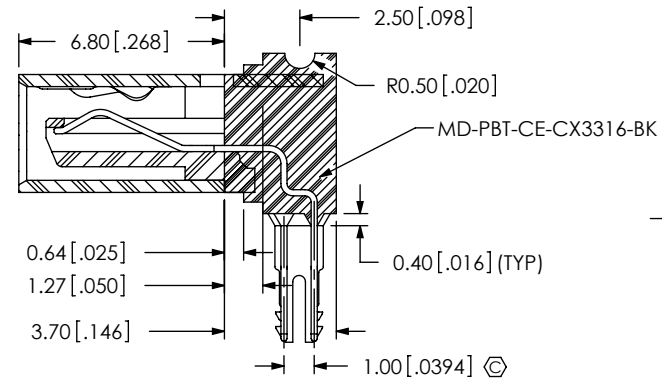
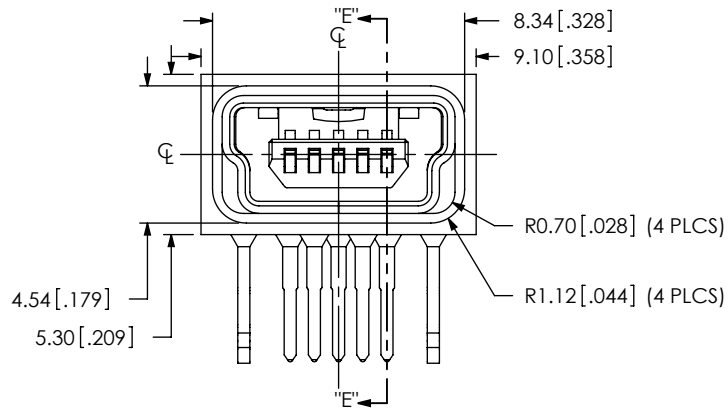
-RA IN-PROCESS 3
FILL C-296-01-X



-RA IN-PROCESS 4
FILL SH41-XX-X



-RA IN-PROCESS 5
ADD PREMOLD



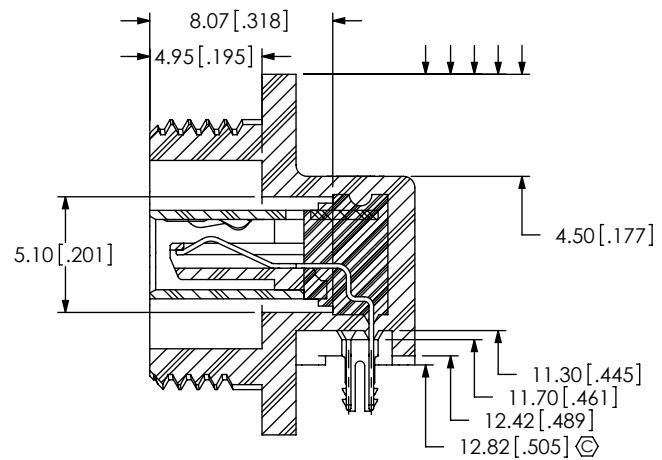
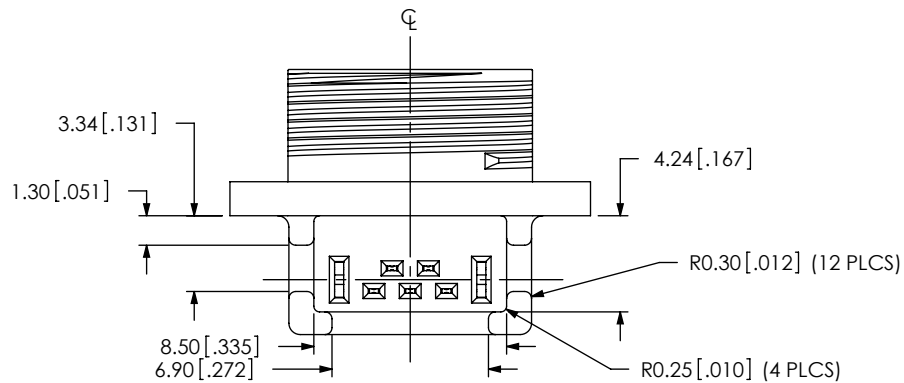
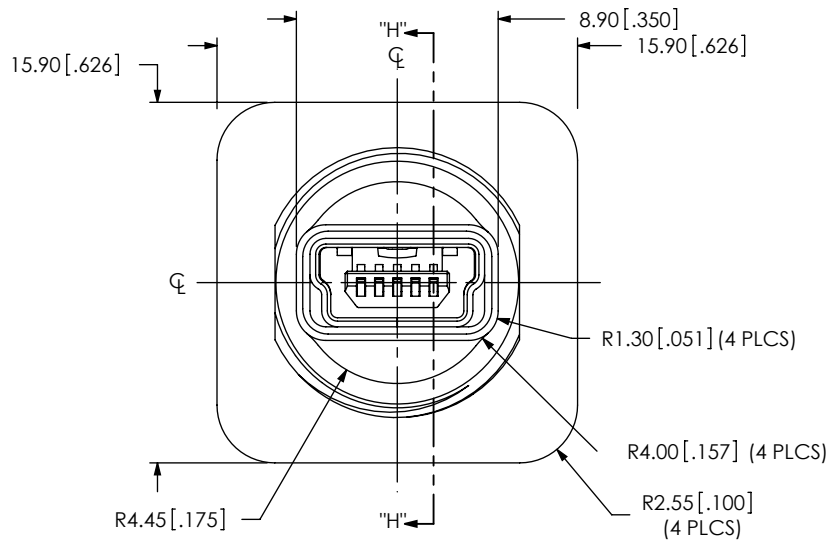
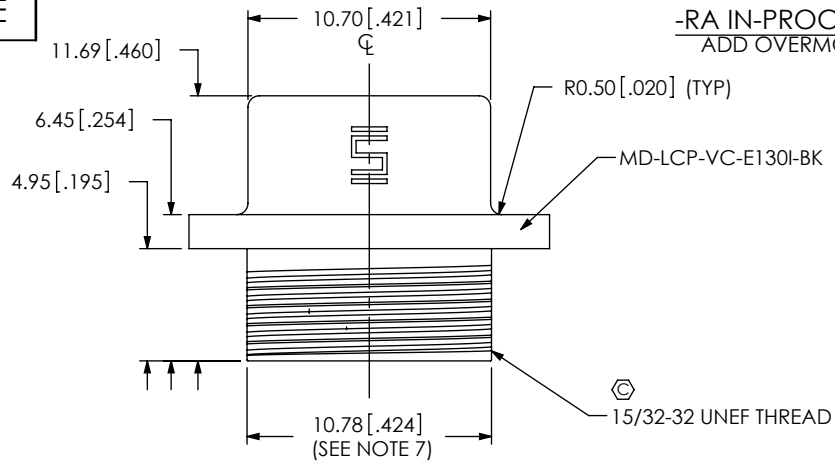
PROPRIETARY NOTE
THIS DOCUMENT CONTAINS INFORMATION CONFIDENTIAL AND PROPRIETARY TO SAMTEC, INC. AND SHALL NOT BE REPRODUCED OR TRANSFERRED TO OTHER DOCUMENTS OR DISCLOSED TO OTHERS OR USED FOR ANY PURPOSE OTHER THAN THAT WHICH IT WAS OBTAINED WITHOUT THE EXPRESSED WRITTEN CONSENT OF SAMTEC, INC.

DO NOT SCALE DRAWING

SHEET SCALE: 1:0.2

samtec	
520 PARK EAST BLVD. NEW ALBANY, IN 47150 PHONE: 812-944-6733 FAX: 812-948-5047 e-Mail: info@SAMTEC.com code 55322	
DESCRIPTION:	SEALED PORT MINI USB
DWG. NO.	SPM-05-X-X-XXX-PF
BY: T NEWTON 06/30/2009	SHEET 3 OF 7

-RA IN-PROCESS 6
ADD OVERMOLD



SECTION "H"-"H"

PROPRIETARY NOTE

THIS DOCUMENT CONTAINS INFORMATION CONFIDENTIAL AND PROPRIETARY TO SAMTEC, INC. AND SHALL NOT BE REPRODUCED OR TRANSFERRED TO OTHER DOCUMENTS OR DISCLOSED TO OTHERS OR USED FOR ANY PURPOSE OTHER THAN THAT WHICH IT WAS OBTAINED WITHOUT THE EXPRESSED WRITTEN CONSENT OF SAMTEC, INC.

DO NOT SCALE DRAWING

SHEET SCALE: 1:0.333333

samtec

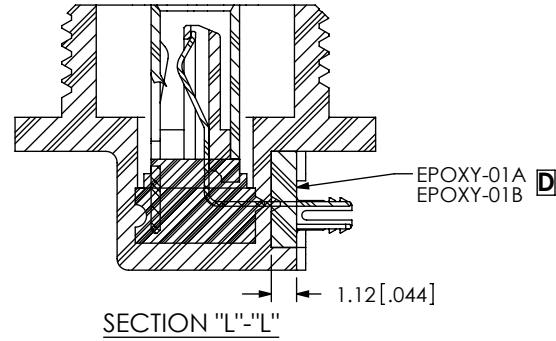
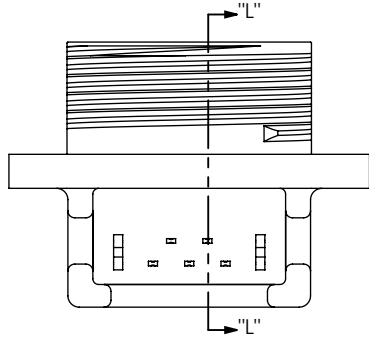
520 PARK EAST BLVD, NEW ALBANY, IN 47150
PHONE: 812-944-6733 FAX: 812-948-5047
e-Mail info@SAMTEC.com code 55322

DESCRIPTION: SEALED PORT MINI USB

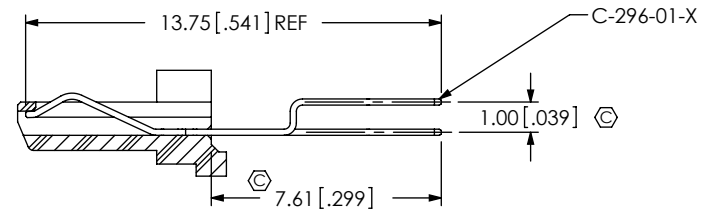
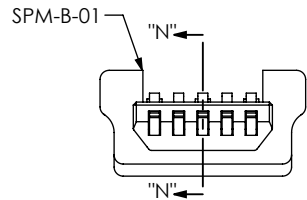
DWG. NO. SPM-05-X-X-XXX-PF

BY: T NEWTON 06/30/2009 SHEET 4 OF 7

-RA IN-PROCESS 7
ADD EPOXY-01A/EPOXY-01B **D**

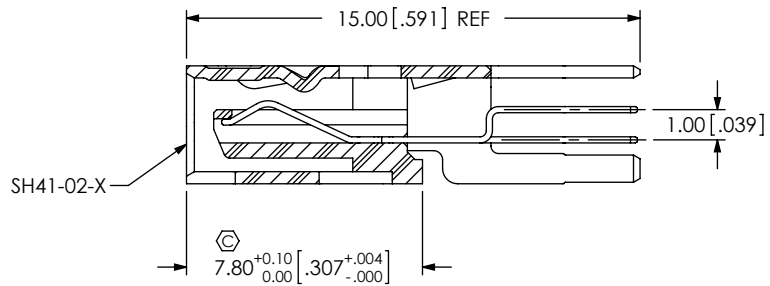


-VTX IN-PROCESS 1
FILL C-296-01-X
(SAME AS -RA IN-PROCESS 3, EXCEPT AS SHOWN)

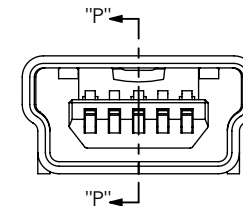


SECTION "N"-"N"

-VTX IN-PROCESS 2
FILL SH41-XX-X
(SAME AS -RA IN-PROCESS 4, EXCEPT AS SHOWN)



SECTION "P"-"P"



PROPRIETARY NOTE
THIS DOCUMENT CONTAINS INFORMATION CONFIDENTIAL AND PROPRIETARY TO SAMTEC, INC. AND SHALL NOT BE REPRODUCED OR TRANSFERRED TO OTHER DOCUMENTS OR DISCLOSED TO OTHERS OR USED FOR ANY PURPOSE OTHER THAN THAT WHICH IT WAS OBTAINED WITHOUT THE EXPRESSED WRITTEN CONSENT OF SAMTEC, INC.

DO NOT SCALE DRAWING

SHEET SCALE: 3:1

samtec

520 PARK EAST BLVD, NEW ALBANY, IN 47150
PHONE: 812-944-6733 FAX: 812-948-5047
e-Mail: info@SAMTEC.com code 55322

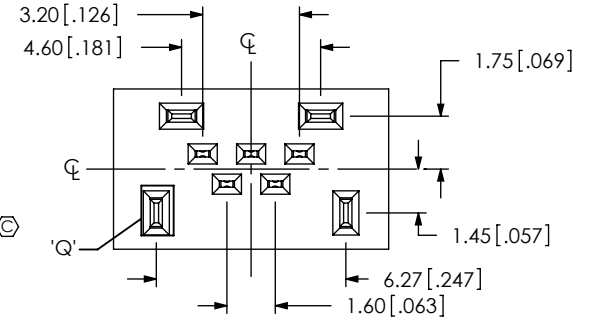
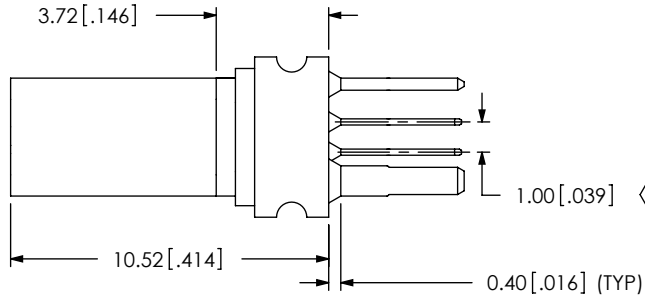
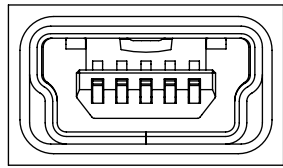
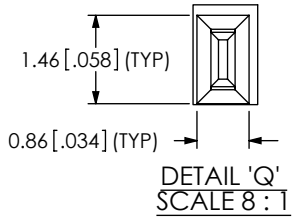
DESCRIPTION: SEALED PORT MINI USB

DWG. NO. SPM-05-X-X-XXX-PF

BY: T NEWTON 06/30/2009 SHEET 5 OF 7

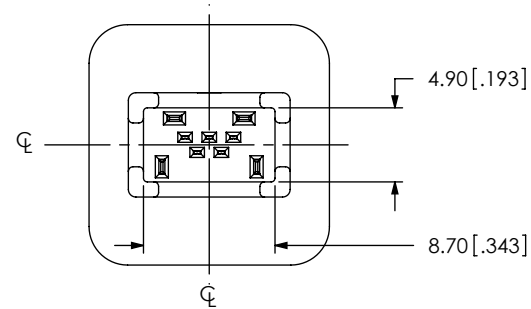
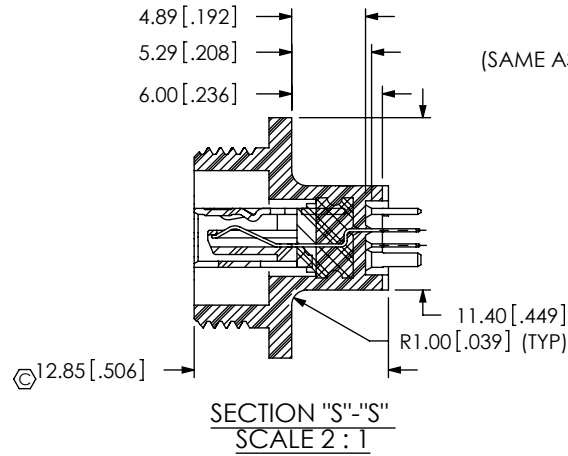
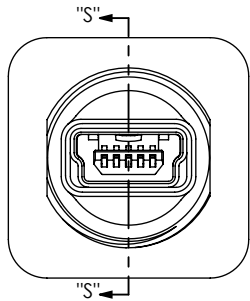
-VTX IN-PROCESS 3

ADD PREMOLD
(SAME AS -RA IN-PROCESS 5, EXCEPT AS SHOWN)



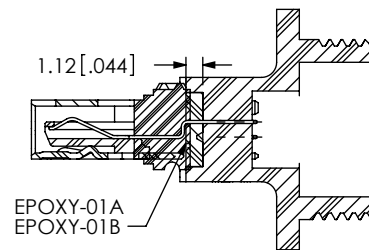
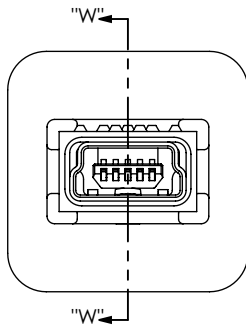
-VTX IN-PROCESS 4

ADD OVERMOLD
(SAME AS -RA IN-PROCESS 6, EXCEPT AS SHOWN)



-VTX IN-PROCESS 5

ADD EPOXY-01A/EPOXY-01B
(SAME AS -RA IN-PROCESS 7, EXCEPT AS SHOWN)



SECTION "W"- "W"
SCALE 2 : 1

PROPRIETARY NOTE

THIS DOCUMENT CONTAINS INFORMATION CONFIDENTIAL AND PROPRIETARY TO SAMTEC, INC. AND SHALL NOT BE REPRODUCED OR TRANSFERRED TO OTHER DOCUMENTS OR DISCLOSED TO OTHERS OR USED FOR ANY PURPOSE OTHER THAN THAT WHICH IT WAS OBTAINED WITHOUT THE EXPRESSED WRITTEN CONSENT OF SAMTEC, INC.

DO NOT SCALE DRAWING

SHEET SCALE: 4:1



520 PARK EAST BLVD, NEW ALBANY, IN 47150
PHONE: 812-944-6733 FAX: 812-948-5047
e-Mail info@SAMTEC.com code 55322

DESCRIPTION: SEALED PORT MINI USB

DWG. NO. SPM-05-X-X-XXX-PF

BY: T NEWTON 06/30/2009 SHEET 6 OF 7

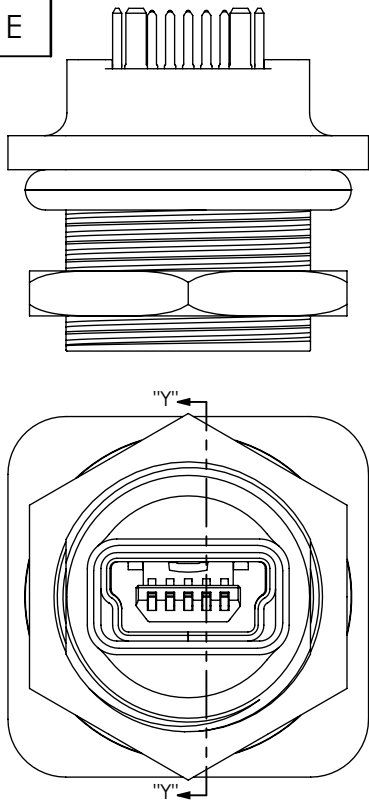
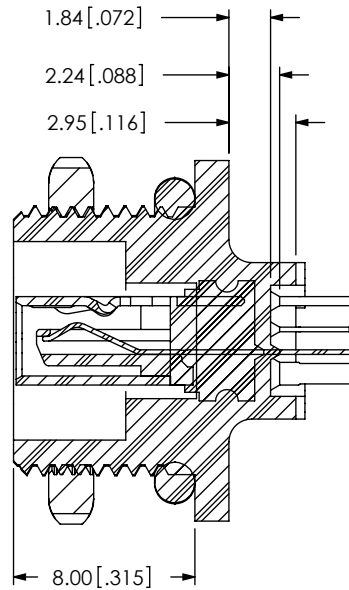
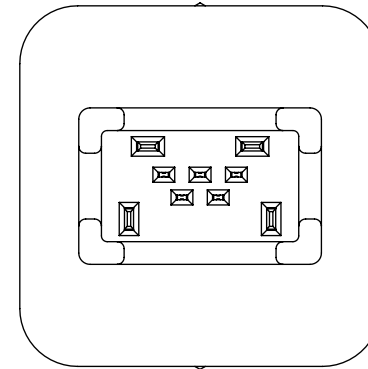
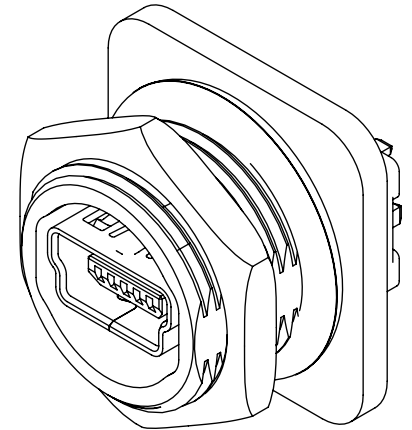


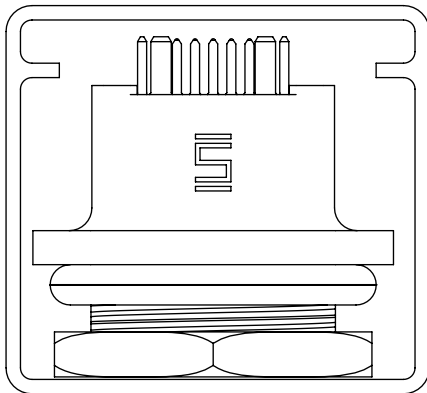
FIG 3
SPM-05-S-B-VT2-PF SHOWN
(SAME AS FIG 2, EXCEPT AS SHOWN)



SECTION "Y"-"Y"
SCALE 3 : 1

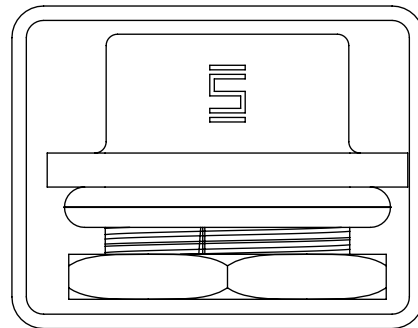


PACKAGING VIEW
-VT1 AND -VT2



TUBE: PT-YFW-12T-P
PLUG: TP-28

PACKAGING VIEW
FOR -RA



TUBE: PT-1-24-02-112
PLUG: TP-28

PROPRIETARY NOTE

THIS DOCUMENT CONTAINS INFORMATION CONFIDENTIAL AND PROPRIETARY TO SAMTEC, INC. AND SHALL NOT BE REPRODUCED OR TRANSFERRED TO OTHER DOCUMENTS OR DISCLOSED TO OTHERS OR USED FOR ANY PURPOSE OTHER THAN THAT WHICH IT WAS OBTAINED WITHOUT THE EXPRESSED WRITTEN CONSENT OF SAMTEC, INC.

DO NOT SCALE DRAWING

SHEET SCALE: 1:0.333333



520 PARK EAST BLVD, NEW ALBANY, IN 47150
PHONE: 812-944-6733 FAX: 812-948-5047
e-Mail info@SAMTEC.com code 55322

DESCRIPTION: SEALED PORT MINI USB

DWG. NO. SPM-05-X-X-XXX-PF

BY: T NEWTON 06/30/2009 SHEET 7 OF 7