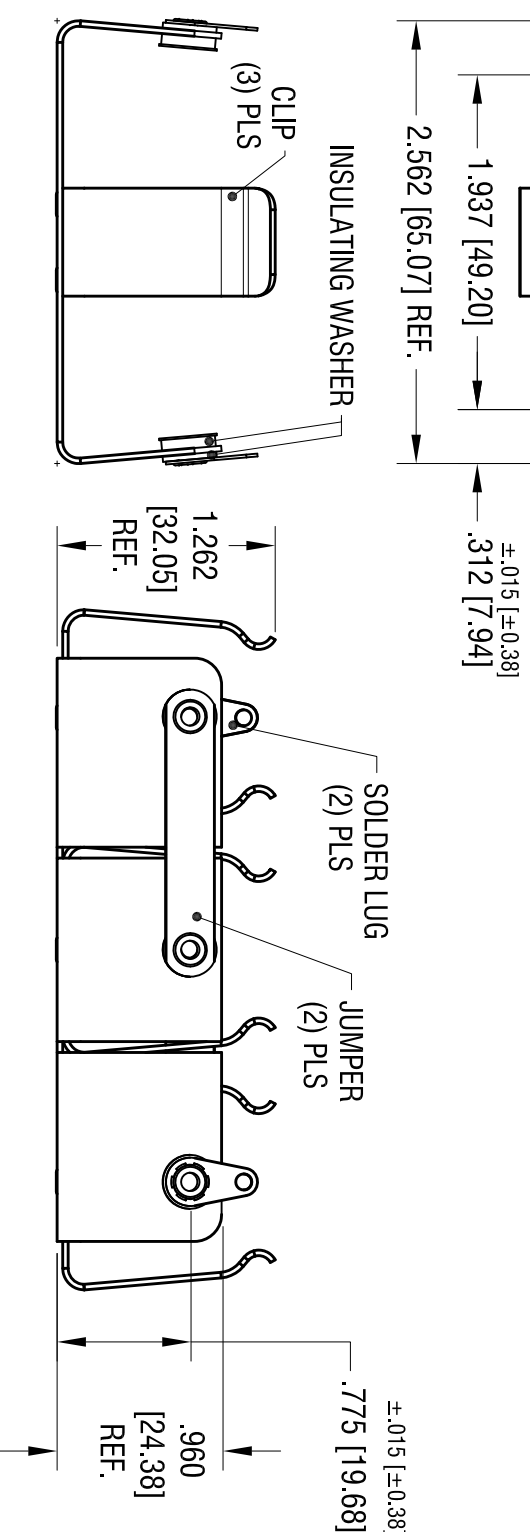
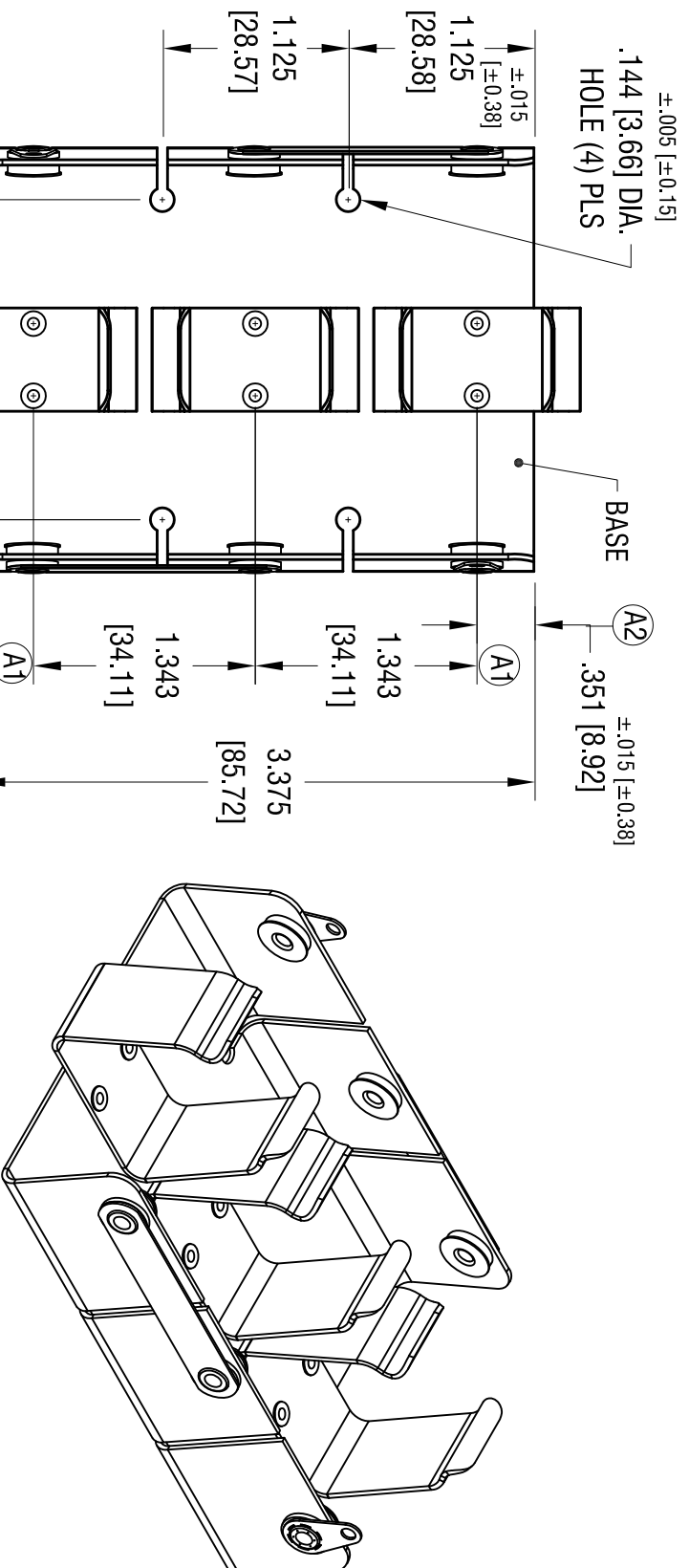


DATE	DESCRIPTION	REV.
5.11.16	CHANGE AS PER ECN 16-056	A
(A1)	WAS 1.350, (A2) WAS 337	



- NOTES:
1. BASE: MAT'L - .032 [.81] THK ALUMINUM
 2. CLIP: MAT'L - .032 [.81] THK ALUMINUM
 3. SOLDER LUG: MAT'L - BRASS
FINISH - TIN PLATE
 4. JUMPER: MAT'L - BRASS
FINISH - TIN PLATE

KEYSTONE ELECTRONICS CORP.			
www.keyelco.com • ASTORIA, N.Y. 11105-2017 • Tel (718) 956-8900			
PART NAME BATTERY HOLDER, (3) 'D' CELLS			
MATERIAL AS NOTED			
FINISH AS NOTED			
TOLERANCES	INCH	[MM]	CODE
DECIMAL	$\pm .010$	[± 0.25]	C
ANGULAR	$\pm 1^\circ$		
UNLESS OTHERWISE SPECIFIED			
DRN BY	BOONE	DATE	7.16.07
APP'D	LN	SCALE	.9X
DWG NO.		153	

THIS DOCUMENT IS THE PROPERTY OF KEYSTONE ELECTRONICS CORP. AND SHALL NOT BE REPRODUCED, DISTRIBUTED OR USED AS A BASIS FOR MANUFACTURE WITHOUT PRIOR WRITTEN PERMISSION FROM KEYSTONE ELECTRONICS CORP.